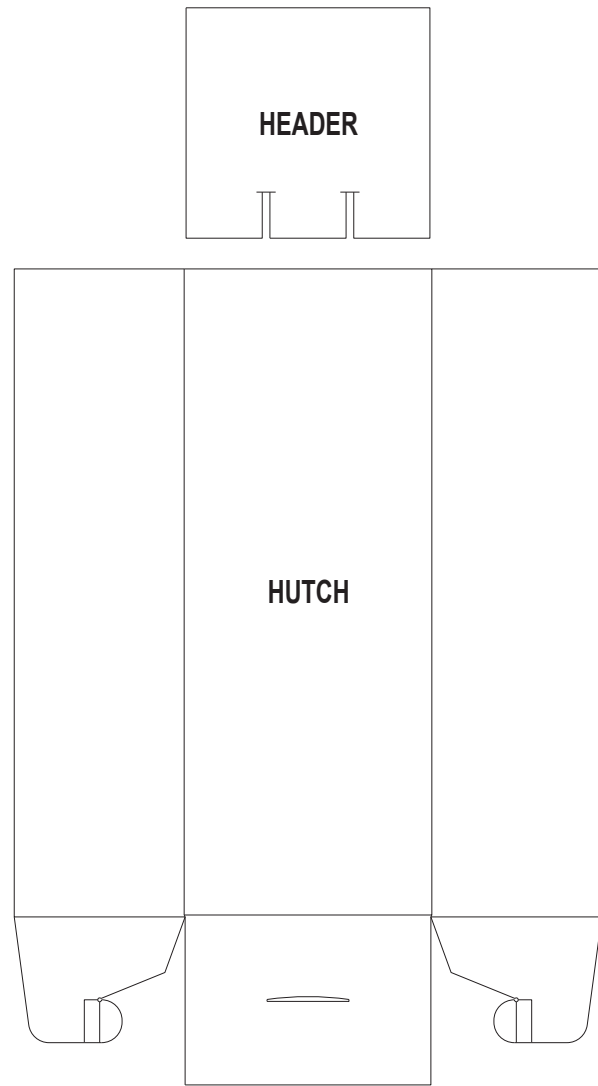
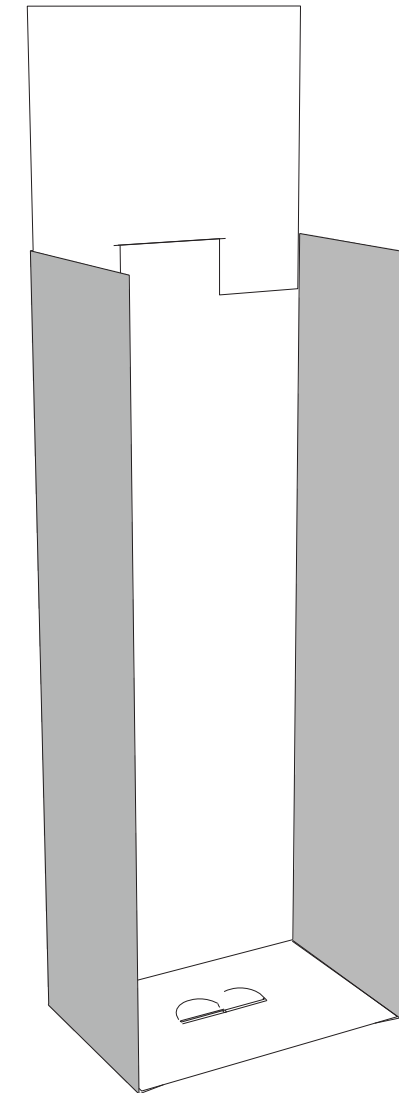


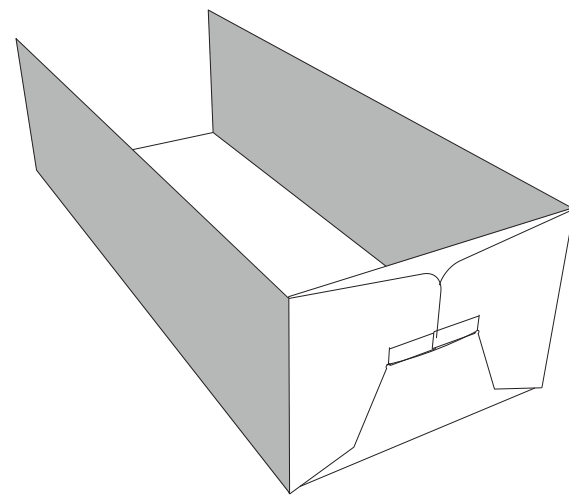
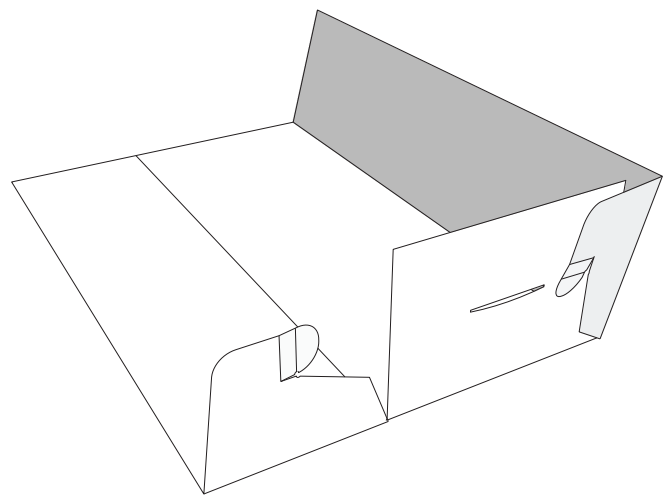
3-Sided Case Stacker Assembly Instructions



Flat Parts

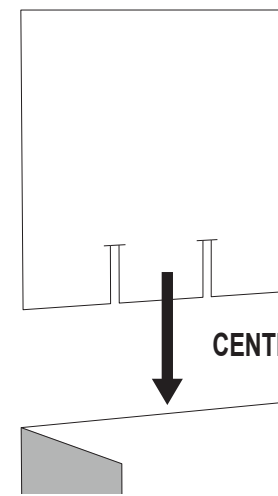


Completed assembly. Follow steps below and place display in desired location, then load with appropriate product



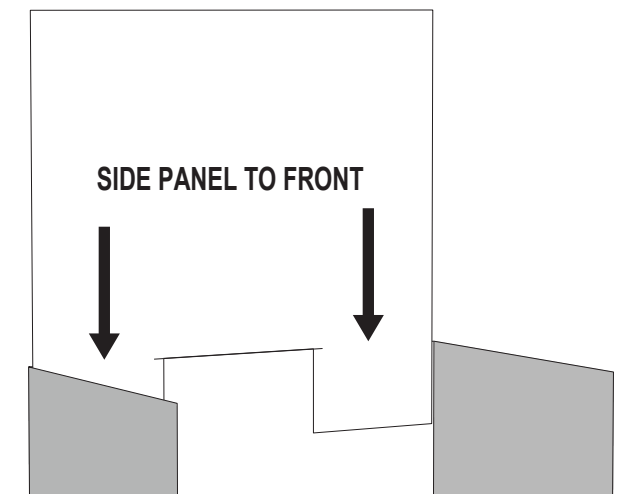
Step 1: Locate hutch. Fold side and bottom panels inward and tuck bottom flaps into slot as shown.

Step 2: Fully lock both tabs into slot to secure bottom as shown.



CENTER PANEL TO BACK

Step 3: Secure header by fitting center panel to the back and side panels to the front.



SIDE PANEL TO FRONT

Step 4: With center panel to the back and side panels to the front, header is properly assembled as shown.